

Johannesburg's Approach to Creating a Safer City



Presented by: Mr M Kgaswane (JMPD Acting Chief of Police)
Meeting: Safer Cities Summit
Date: 19-20 March 2019



Content: Purpose of the Presentation

- The **Key Policy Imperatives** for the strategy;
- Resolving safety issues through the **Joburg City Safety Strategy (JCSS)**;
- The **multi-disciplinary approach** from the JCSS;
- **Key Outcomes** of the JCSS;
- **Implementation** of the JCSS Outcomes; and
- **Lessons Learnt.**



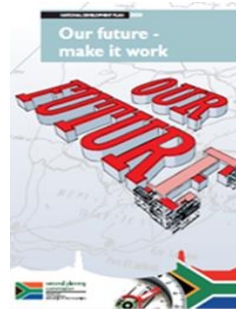
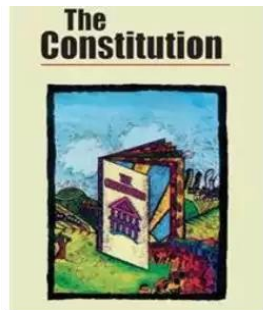
Our Key Policy Imperatives for the Safety Strategy



SUSTAINABLE DEVELOPMENT GOALS (2015 – 2030)



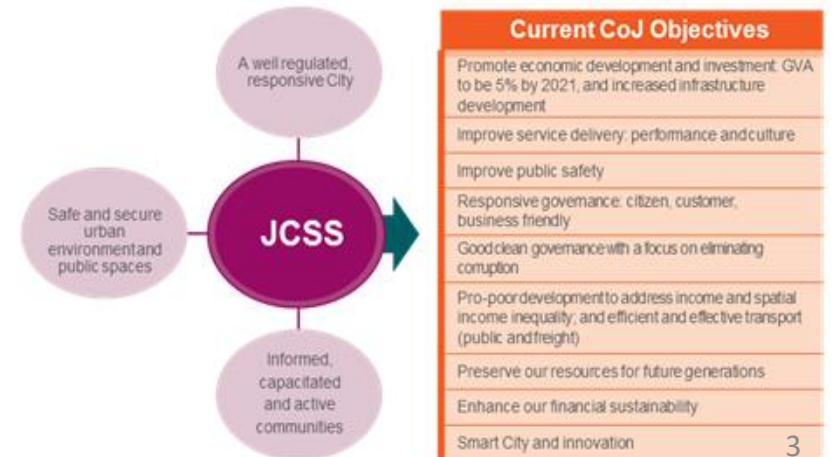
“make cities and human settlements inclusive, **safe**, resilient, and sustainable”



How the JCSS Contributes to the CoJ 10 Point Plan

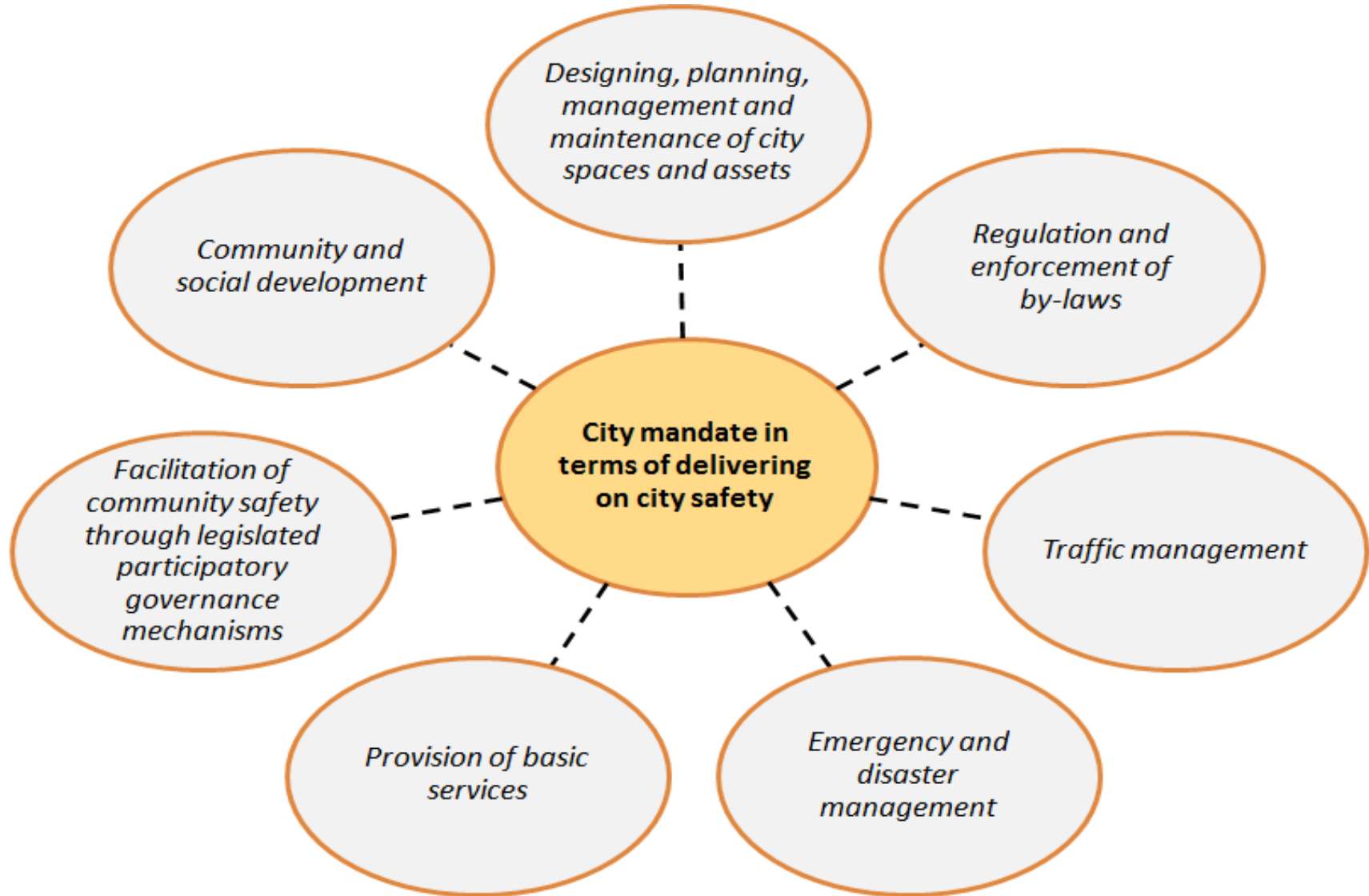


CoJ 10 Point Plan	
01 Ensure that the entire City adjusts its mindset to the environment of a new coalition government	06 Produce an official housing waiting list
02 Run a responsive and pro-poor government	07 Produce a list of all semi-completed housing units
03 A minimum of 5% economic growth in Johannesburg by 2021	08 Fast-track the delivery of title deeds
04 Create a professional civil service that serves the residents of Johannesburg with pride	09 Initiate a pilot project for a clinic to operate for extended hours
05 Ensure corruption is public enemy number one	10 Revitalise the Inner City of Johannesburg





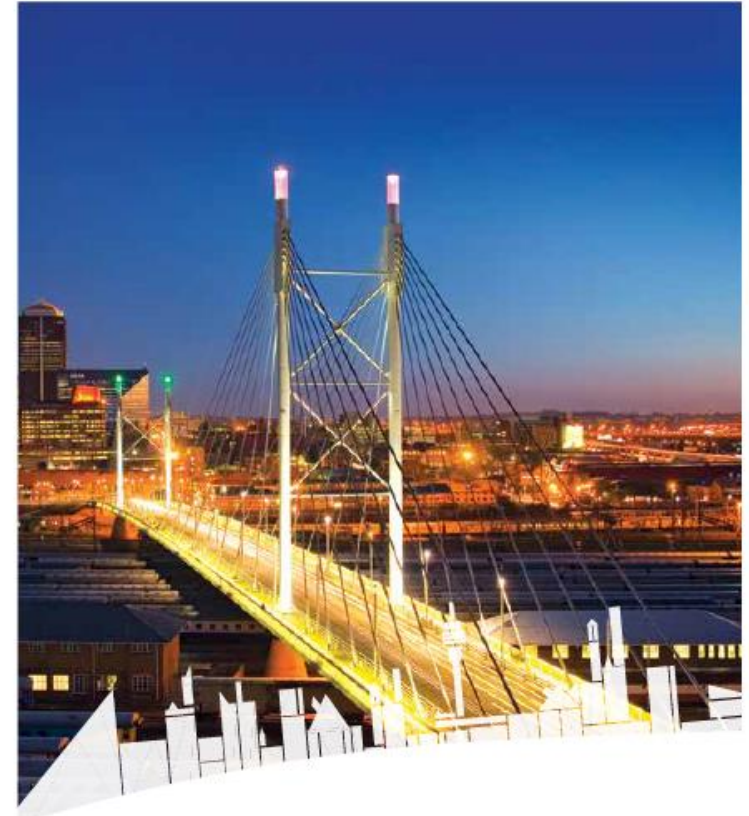
Resolving Safety Issues Through the Multi-Sectoral Approach As Per Local Government Mandates





The Purpose of the Joburg City Safety Strategy (JCSS)

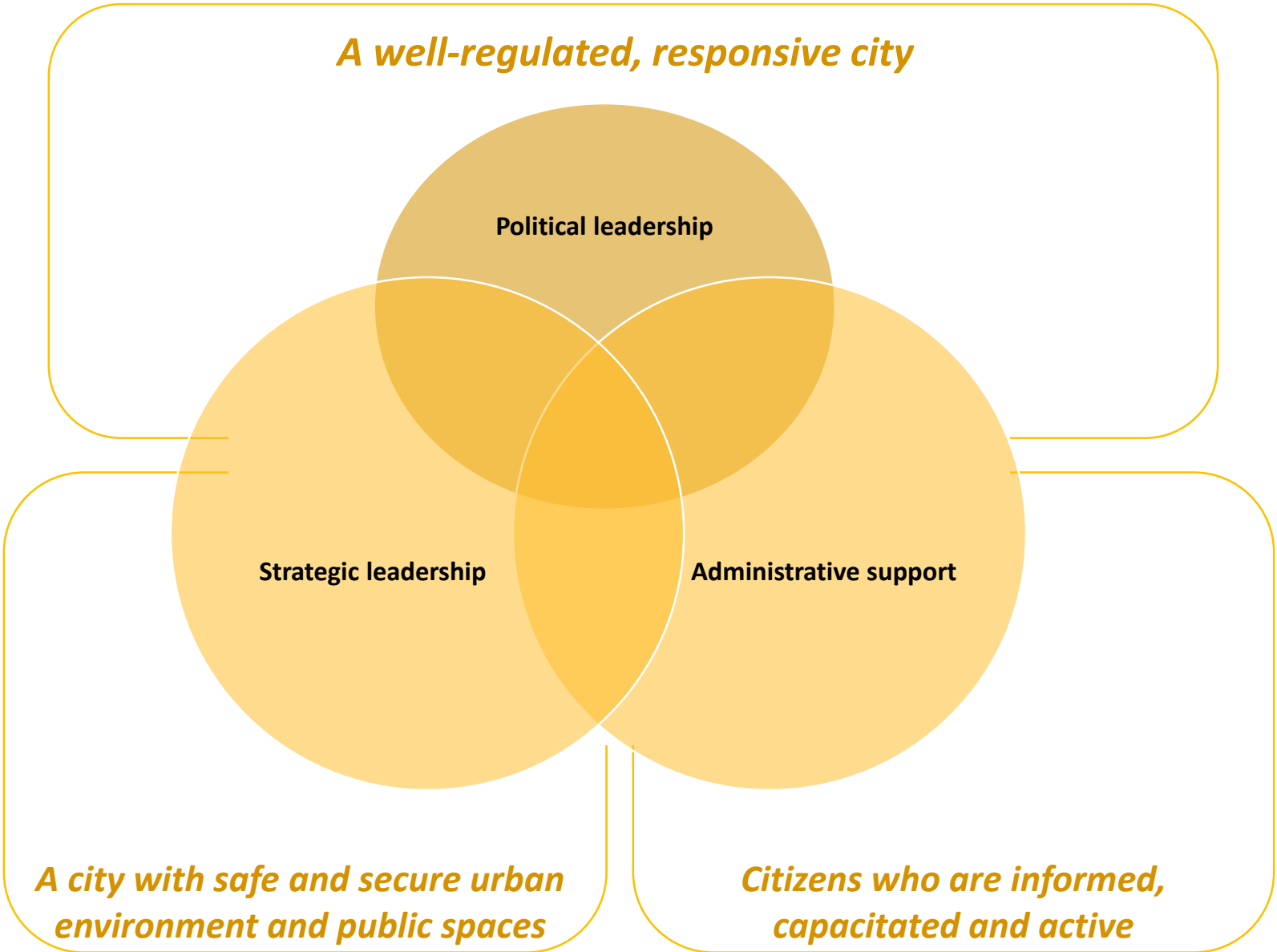
- The **Joburg City Safety Strategy (JCSS)** was developed in 2003 and revised in 2006/07 and 2016/17.
- The strategy outlines the **approach** used to **implement the Safer Cities concept**;
- The Department of Public Safety is the custodian of the strategy and it is a **city-wide strategy and implemented owned by all City departments and MOEs**.
- The key objectives of the strategy include:
 - **Framework** to guide strategic interventions and plans focused on safety risks impacting the city;
 - Provides an **integrated, collaborative, multi-agency approach** to identify and problem solve underlying issues causing safety and security risks
 - Change **safety perceptions** of the city; and
 - Ensure **alignment of safety planning** to the objectives of **key policy imperatives**.





The Key Outcomes of the JCSS

Safety Approach: JCSS Objectives



JMPD

**Implementation of JCSS Outcome 1:
A Well-Regulated, Responsive City**





Buya Mthetho Performance Feedback 1 July to 31 December 2018

Arrest	Total
Driving under the influence of alcohol	4 445
Drug related crimes	78
Firearm Related Crimes	44
Public violence	68
Assault Cases	42
Illegal immigrants	139
Fraud	36
Malicious Damage to Property	17
Possession Stolen Goods	31
Possession of Hijacked Vehicles	91
Robbery cases	61
Reckless and Negligent Driving	135
Grand Total	5 187

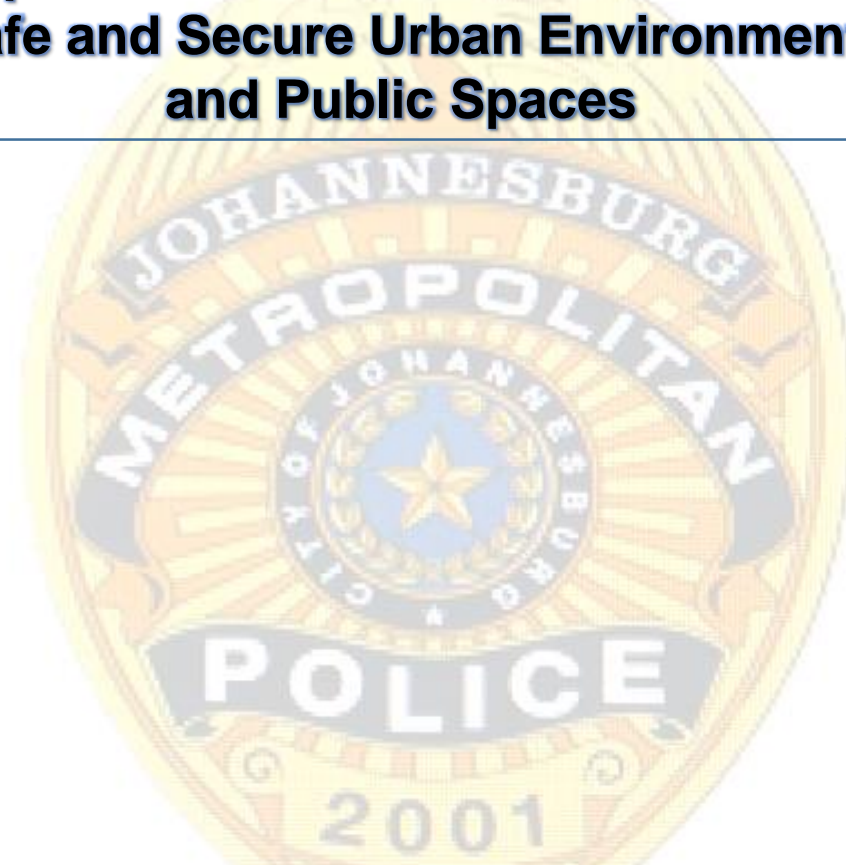
Recovery	Total
Firearms Recovered	42
Vehicles Recovered	372
Drugs Recovered	455,5 Kilo grams – Dagga 1,509 Kilo grams - Cocaine

General

Description	Total
Traffic offences-Citations issued	1, 304, 887
By-Laws cases	3 183
Enforcement Operations conducted	3 149
Drug Search and Seizures Operations	78

JMPD

**Implementation of JCSS Outcome 2:
Safe and Secure Urban Environment
and Public Spaces**





Mainstreaming the JCSS Through Safety Audits : Case Study - Westbury

Early detection



**Hotspot
Identification**



Safety Audit Theory: Broken Windows Approach

Increase in physical environment deterioration



© Can Stock Photo - csp0450143

Increased concern for personal safety



Less public participation



Vandalism, delinquency, disorder



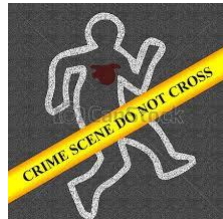
Public withdraw



© Can Stock Photo - csp19307612



www.shutterstock.com - 238482



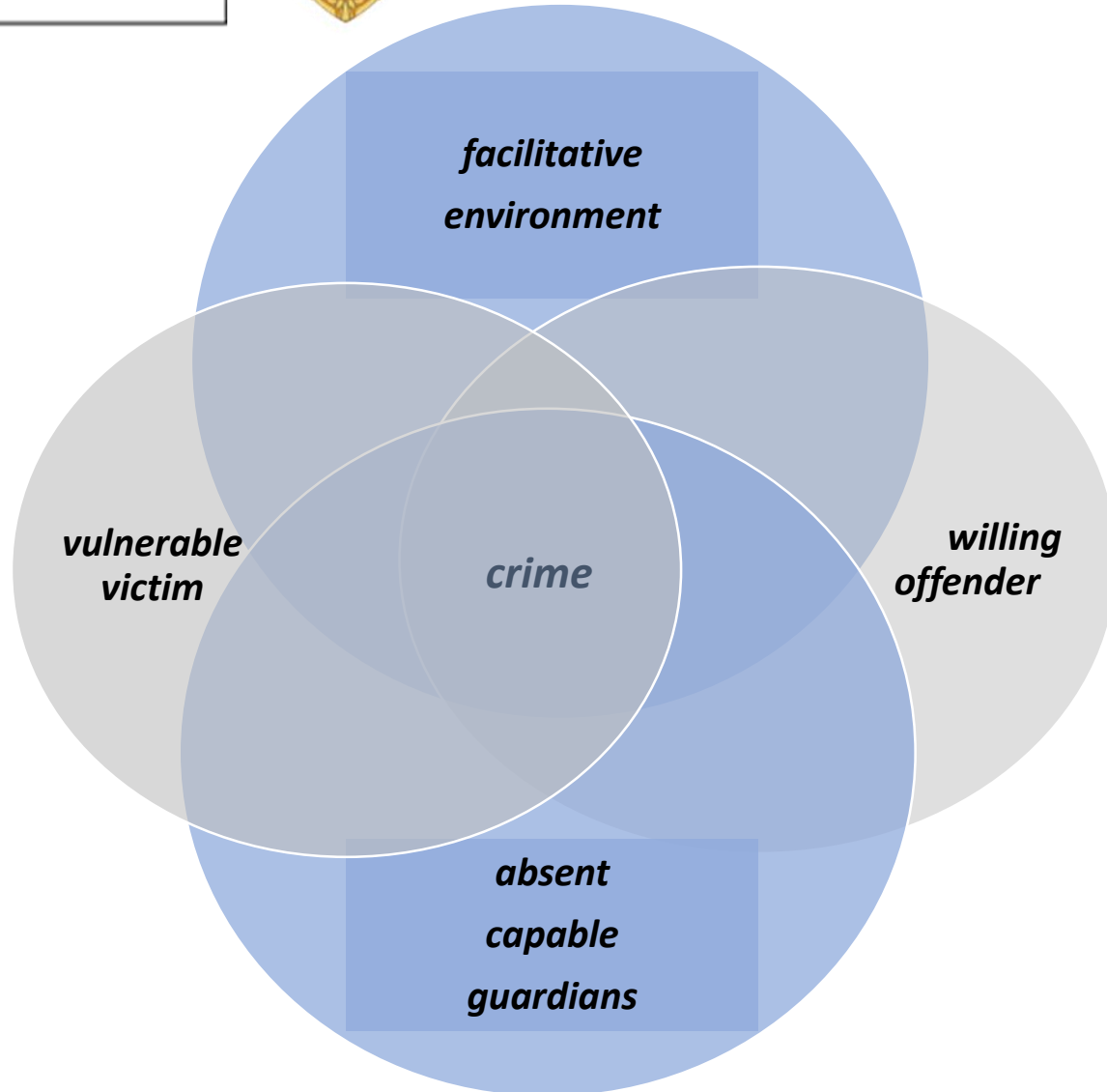
© Can Stock Photo - csp8654611

More crime and grime





Safety Audit Theory: Crime Reduction Versus Crime Prevention



Situational and Physical crime prevention:

- Focus on a problem-orientated approach for integrated solutions and greater inclusion of role-players;
- Assessment and actions related to:
 - **Physical environment** (from design to implementation and management of site);
 - Key **role-players** (agents of service delivery and urban management; built environment; social and civic organisations; investors in economy; etc)
 - **Communities** as capable guardians of public spaces and places



Westbury Safety Audit: Property and Infrastructure



- Public Safety undertook an audit in collaboration with the JDA in 2015 ;
- Located in **Region B – Wards 82 and 69**
- **100** hectares in extent
- High levels of **unemployment, substance abuse** and **crime**
- 2001 census population figures – 19 000
- Average household size of **8.98 persons per household**

The following key issues relates to safety:

- Most Council housing have **structural defects**;
- **Illegal dumping** and **pollution** pose health risks;
- Poor **maintenance or replacement of bulbs for lighting** - lack of stock or difficulty in procurement will result in **delays with maintenance** and **facilitate unsafety and crime**



Key interventions Developed from the 2015 Westbury Audit

CPTED Principles	Interventions	Responsible Parties	Timeframe
Surveillance	<ul style="list-style-type: none"> • Identification and mapping of safety and security issues, stakeholders mapping to understand key safety issues and hotspots • Create a community forum or committee with whom relevant city departments engage on safety issues • Establish a joint visibility plan for patrols and visibility during peak times and weekends and festive periods • Enhance visible policing and facilitation of local CPFs and street patrols 	JMPD	Short term
Territoriality	<ul style="list-style-type: none"> • Formulate and implement public engagements on projects implemented as part of Westbury precinct plan to ensure awareness and public buy-in through-out all phases of project implementation. • Implement signage to educate and inform the public regarding prohibited activities within and around parks and public open spaces and amenities to facilitate better by-law enforcement and controls • Create awareness around NMT cycle lanes and look at the what supporting infrastructure is required to make use of NMT attractive and user-friendly 	JDA, Transport	Short term
Limitation of access, egress and through movement:	<ul style="list-style-type: none"> • JRA to investigate need for pedestrian crossings at identified intersections • Undertake an assessment of all alleged illegal land uses and activities 	JRA, Development Planning/ JDA/ EMS	Short term Medium - Long term
Target hardening/ physical security:	<ul style="list-style-type: none"> • Regular enforcement and compliance. Development Planning to lead Building Control; JMPD; Environmental Health; Gauteng Liquor Board; Housing; municipal entities and other relevant stakeholders • Repair any damaged/ vandalised bulk and social public infrastructure, in particular the identified structural damage in all council owned flats as well as aging, non-functioning, leaking or damaged infrastructure to prioritise and budget for future capital projects in Westbury. • Develop a lighting master plan in conjunction with all relevant stakeholders. The lighting master plan should 	JMPD, CRUM, Entities CRUM, Entities Housing City Power	Short term

The problems in Westbury were too vast and varied for JMPD to resolve alone... Other role players are needed



Westbury Crime Mapping of Hotspots: Follow up Community Participation with the Youth

Table 1: Crime Statistics on Westbury

Crime Category	Year 2016	Year 2017	percentage	Increase/decrease
❖ Murder	27	36	25%	↑
❖ Attempted murder	35	55	36.6%	↑
❖ Illegal possession of firearms and ammunition	34	53	36%	↑
❖ Drug-related crime	938	731	23%	↓
❖ All theft not mentioned elsewhere	1089	1008	8%	↓
❖ Carjacking	49	100	60%	↑
❖ rape	0	41	100%	↑
❖ Community-reported serious crimes	0	4923	100%	↑

The City undertook to pilot a Shot-Spotter Project in the area upon noting **alarming increases in the incidents of crime**. The Joburg City Safety Programme (JCSP) office resolved to undertake a safety audit with a non-governmental organisation in the area working with youth. Together with the youth the JCSP office conducted a **crime mapping exercise** in order to identify hotspot area. The official crime statistics provides the status quo of crime in Westbury in 2017.



Westbury Hotspots Crime Mapping: Follow Up Community Participation with the Youth



Assistant helping to seat in groups and giving them tools to work with.



Youth instructed to seat in groups for the task given to them to draw west berry map.



Findings from Youth Crime Mapping Analysis : Identification of Crime Problem Areas

Youth identified safe and unsafe areas and verified the findings of the safety audit. The following section outlines an analysis of the crime hotspot mapping exercise undertaken by youth from Westbury:

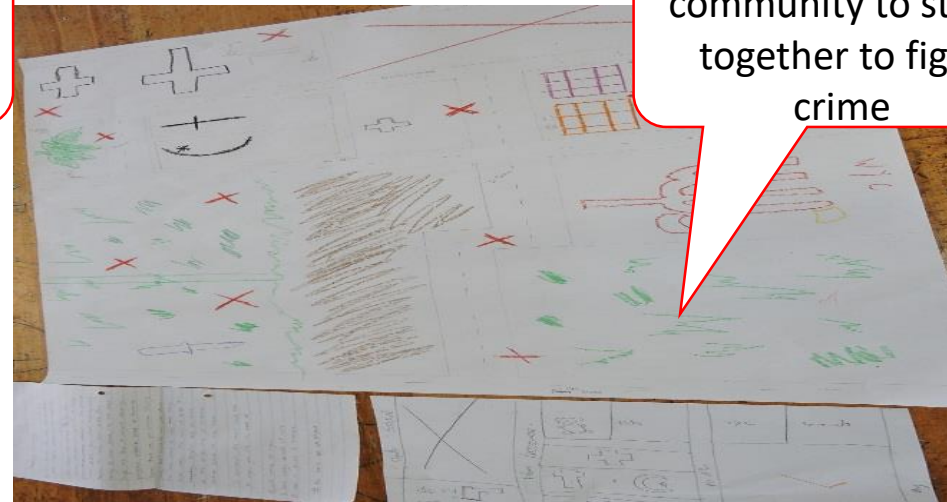
Analysis of the Crime Mapping Exercise

- Crime is prevalent in high density settlements
- Areas which society regards as safe areas (such as churches) have become crime hotspots
- Crime is most prevalent in the northern and eastern part of the suburb.
- Street crime is a major challenge
- Sporting fields in and around the area are unused and have become danger zones to society

Better role models and activities for youth!

Social programmes for parents, youth

We need community to stand together to fight crime





Westbury Public Protests on Crime and Safety : Could This Have Been Prevented?

The 2015/16 Audit highlighted the following findings:

- **corners** where **drugs** are sold are known;
- many community members noted police officials from **Sophiatown Police Station** allegedly take **bribes** on a regular basis;
- **Gang rivalry** is mainly between the **'Varadors'** and the **'Fast-guns'** ;

Recent events in Westbury include:

- Gang violence: Shootings have resulted in many **community casualties**;
- The **shooting and death of a mother** and wounding of her child
- Sparked **violent protests** in 2018;
- Resulted in: Damage to **public infrastructure**; **heightened awareness of their issues on drugs throughout the country**; **political** interventions required.

Policing cannot be the only intervention to create safer spaces in Westbury. Resources and strategies are required through an IG approach to ensure integrated, co-ordinated planning and implementation.



JMPD

**Implementation of JCSS Outcome 3 and Cross Cutting Issues:
Smart Technology and Informed,
Capacitated and Active Citizens**





Smart Technology Initiatives

- The Johannesburg Metro Police Department (JMPD) has undertaken several projects using **SMART technology (IIOC, Shotspotter and CopCast)** to assist officers with real-time data, assist in terms of **accounting for their actions** and their general **safety**;
- The **Smart Policing Pilot (CopCast)** was undertaken by the JMPD with only 15 active participant; however only 3 officers performed well.
- The **Smart Policing app** was designed in Brazil to ensure police accountability and safety for both officers and the public.
- Smart Policing Pilot Assessment Outcomes : need for change management to manage officer expectations; and officer mistrust/ perception that the app would be used to gain evidence to use against them for dismissal.
- [The link below demonstrates the use of the app by the JMPD in a shooting incident in Midrand](#)



Johannesburg
2015

10 Cell Phones
15 Police Users



Midrand Shooting Incident

Recorded by: Sgt Rico van Wyk - Explosives
Recorded at: 2016-09-27 13:00:37.046+00

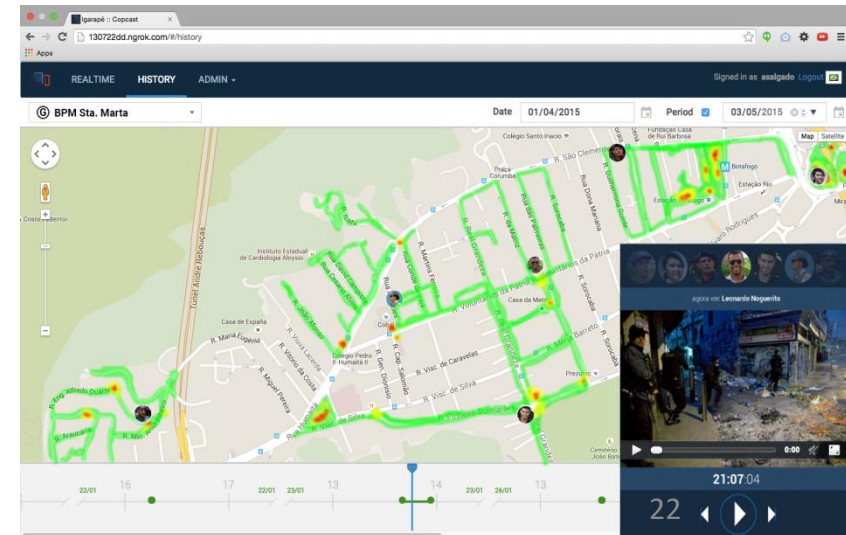




Benefits of Smart Technology

The key benefits of using the Smart Policing approach include:

- The provision of **evidence for investigation purposes**;
- Resource management and incidents management/oversight;
- Accountability-enabling **assessment** of critical steps in the occurrence of **contested incidences**;
- Facilitating use of actual incidences for **training/operations debriefing** purposes;
- Building public confidence in incident management
- Communication-provides potential to **showcase good work** achieved by law enforcement agencies;
- **Identification of limitations** within the Criminal Justice System – from training to scene management to handover.



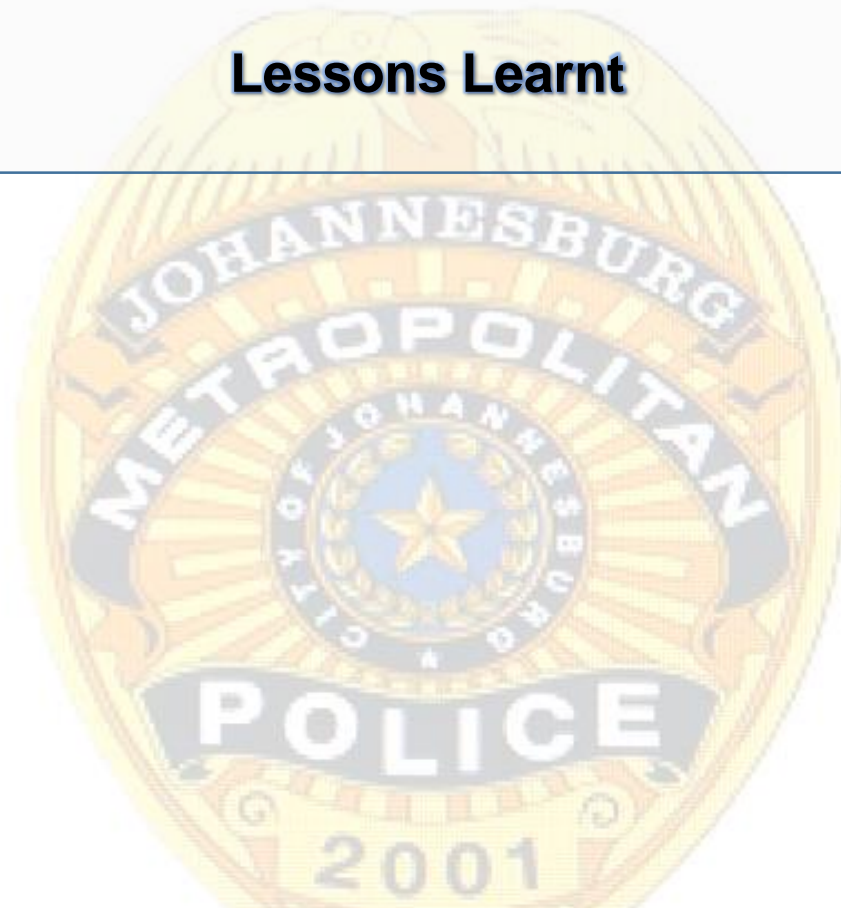


Future JMPD Projects

- The Johannesburg Metro Police Department (JMPD) is currently in the process of developing a methodology for **predictive crime mapping** – key challenges include access to crime data to sustain the project;
- The implementation and use of **dashboard cameras** in JMPD vehicles;
- The development of a **CCTV policy including analytics**.

JMPD

Lessons Learnt





Public Views on Crime and Safety

LEVEL I: CRITICAL/EXTREME PRIORITY

Priority	Household assessment - Focus areas
1 Safety and crime	<ul style="list-style-type: none"> ➤ Unsafe inner city centre ➤ CoJ unsafe after dark ➤ Feel unsafe while living in the CoJ ➤ Feel unsafe when travelling on City's roads ➤ Feel unsafe in own neighbourhood ➤ Alleged increases in crime incidents in the inner city and neighbourhoods ➤ Increased fear of crime
2 Inclusiveness	<ul style="list-style-type: none"> ➤ Inadequate amount of contact with the CoJ ➤ Inadequate opportunity for community engagement ➤ Feeling of dissimilarity among people/communities ➤ Low loyalty to CoJ community ➤ Low trust in CoJ to solve the problems
3 Corruption	<ul style="list-style-type: none"> ➤ CoJ lack efficiency in combating corruption
4 Customer Care	<ul style="list-style-type: none"> ➤ Extremely poor handling of fire and ambulance enquiries via Call Centre ➤ Extremely poor handling of water enquiries at Walk-in Centres ➤ Extremely poor handling of billing enquiries via Call Centre and at Walk-in Centres ➤ Extremely poor handling of 'other' enquiries via Call and Walk-in Centres
5 Community Services	<ul style="list-style-type: none"> ➤ Disillusionment with municipal public toilets ➤ Disillusionment with municipal clinics ➤ Disillusionment with grass cutting ➤ Disillusionment with landfill sites
6 By-law enforcement	<ul style="list-style-type: none"> ➤ Lack of control of urinating in public ➤ Lack of control of illegal dumping

The 2017 CoJ Customer Perceptions Survey shows the levels of household satisfaction regarding overall service delivery in the City of Johannesburg.

The results of the survey identified that safety and security concerns pertain to more than just crime and policing.



Lesson Learnt

- The **cross-cutting nature of crime and safety** requires more than just a policing approach.
- **Ownership of City safety strategies** and plans is important
- Given the cross-cutting nature **implementation requires champions** at various levels.
- **Budget allocations** for the implementation of safety strategies interventions is critical.
- **Multi-agency interventions** have proven to work in order **to ensure sustainability** of interventions and the reverse is also true.
- **Upskill officials** to engage with communities through a problem solving approach to safety planning and intervention.



Thank You

Questions and Discussion