



Business Against Crime
South Africa™



TOGETHER WE SERVE

RURAL SAFETY SUMMIT 27 -28 JUNE 2022

E2 – A RURAL PERSPECTIVE



ON A JOURNEY TO A SAFER SOUTH AFRICA

Creating a safe and secure, crime free environment, that is conducive for social and economic stability, supporting a better life for all.

#PatrioticandSelflessService



INTRODUCTION



On 12 October 2020, the Honourable President Mr Cyril Ramaphosa said the following after a brutal attack and murder in Senekal in the Free State (*selected text*):-

“Those people who think that farm attacks affect just a small part of our population are wrong. The farming community is an integral part of our economy. The farming community produces the food that we eat. Violent crime on farms poses not just a threat to the safety of our rural communities, but to our nation’s food security.

Numerous studies show that crime in farming communities is largely opportunistic. Rural communities are more vulnerable because of their isolated location and, as a result, the relative lack of access to security and other services.

The success of our Rural Safety Strategy rests on greater coordination and better communication between the South African Police Service, business, farming organisations and communities.

There needs to be more collaboration between farm watch organisations and Community Policing Forums. Farming communities, including farmworkers, must actively participate in these forums, because it is they who are the eyes and ears on the ground. Traditional leaders need to be empowered to play a greater role in safety in farming communities.

Farmers need to more readily provide access to their lands to law-enforcement officials. Private security companies operating in farming communities need to work more closely with the SAPS, and at the same time ensure that arrests of suspects are done within the confines of our Constitution. We must continue to explore additional measures, such as integrated communications technologies, to step up rural safety.

We must remain vigilant and work with the police to keep our communities safe. We must not harbour criminals among us. In far too many instances, perpetrators are known to communities and are sheltered by them. We must not be blinded by our own prejudices to the suffering and pain of others. It should not matter to us if the victim of violent crime is black or white. To do so would be a betrayal not just of this country’s founding principles, but of our own humanity.



AIM OF THE RURAL SAFETY STRATEGY



- The National Rural Safety Strategy (“the Strategy”), as reviewed in 2019, aims to address rural safety as an integrated day-to-day policing approach by creating a safe and secure rural environment. The aim of the Strategy is to:-
 - Respond to the safety and security needs of the rural communities;
 - Provide a safe and secure rural environment to support food security, social and economic development;
 - Strengthen the building of relationships in the rural community;
 - Encourage all stakeholders in rural safety to cooperate in a coordinated and integrated manner;
 - Engage in joint planning, implementation, development and evaluation of the execution of the plan to combat crime and the lack of safety and security, in rural areas, as determined by the National Crime Combating Strategy.
- The implementation of the Strategy started on 1 April 2020 and will end on 31 March 2025

WHERE TO BE IMPLEMENTED?

- In all 906 identified rural and rural / urban police stations within all nine (9) provinces across the country



WHAT DOES THE STRATEGY ENTAIL?



- An integrated and multi-disciplinary approach, including
- the mobilisation of the rural community in creating a safe and secure, crime-free environment
- which is conducive to food security, the reduction of serious and violent crime and
- the prevention of stock theft, as well as
- social and economic stability

IS SUCCESS POSSIBLE?

- **YES**, but it is dependent on the effective participation and accountability of all governmental and non-governmental stakeholders

AS WELL AS

- The active participation of the community in local crime prevention initiatives and interventions



WHAT IS RURAL SAFETY? 1/2



Rural Safety means all safety and security issues that affect non-urban communities, which deal with human, property and food protection, as well as security. (Reviewed National Rural Safety Strategy 2019).

Rural areas - Consists of Integrated Sustainable Rural Development Nodes (ISRDN) which are districts identified by government due to their high levels of poverty and underdevelopment. It also include planned and informal rural settlements, villages and dispersed/scattered settlements not included as part of the ISRDN nodes (country / peri-urban)

Urban Areas - Urban core and fringe of metropolitan areas (town / suburb / metropolitan areas)

Rural / Urban mix - Towns with surrounding farm areas (towns / country)

Farm – An area of land and its infrastructure, used for agricultural pursuits (including the keeping of livestock or wild animals), ecotourism or conservation purposes. The definition also includes cattle posts, rural villages / communal areas, areas where subsistence farming takes place and game farms.

Small holding – A plot outside a build-up area of a city or town used for agricultural, residential or other purposes, but for reporting purposes, excluding properties subdivided into separate residential units, informal settlements or land, which is formally rezoned to become clearly distinguishable from an agricultural holding.

Village – a group of houses / huts and associated buildings larger than a traditional homestead and smaller than a town, a populated area with no fixed boundaries, situated in a rural area, excluding informal settlements.



WHAT IS RURAL SAFETY? 2/2



Rural communities are considered soft targets by criminals. This is due to the remoteness of farms, large distances between farms and villages which creates challenges in respect of access to the Service, as well as a lack of or poor basic infrastructure, such as roads, to support service delivery. Farms, in particular, are also vulnerable, due to the perception that farmers are rich and keep firearms and cash on the premises (to pay wages).

Rural police stations are often isolated and responsible for policing vast areas. The extent and high levels of poverty and unemployment within rural communities create a particular challenge to policing, since the poor socio-economic factors in the community increases the levels of crime.



Notwithstanding the challenges experienced in addressing the complexity of Rural Safety, no single stakeholder can address the challenge on its own –

COLLABORATION IS KEY



ENVISAGED SITUATION WHAT TO DO?



- The **aim of this proposal is** to integrate operational processes and information / intelligence currently available in the community. One has to utilise and effectively harness all the resources at, not only Government's disposal, but also that within the private sector, in order to address Rural Safety in a results-driven and holistic manner.

- **An intelligence driven approach** forms the backbone of the duty to detect and deter crime. Collated and verified crime information, such as targeted police patrols, local operational planning and efforts to improve and strengthen crime investigation, reduction and prevention.

Generating the kind of information needed, to better understand the type of crime, violence, threats and vulnerabilities that different communities face, **must be supported by a community-centered approach to policing.**

- The **role players** will therefore include, but is not limited to, all law enforcement agencies, the farming communities, the private security industry and any co-opted role-players deemed necessary to address the issue at hand.

FOCUS GROUP INTERACTION



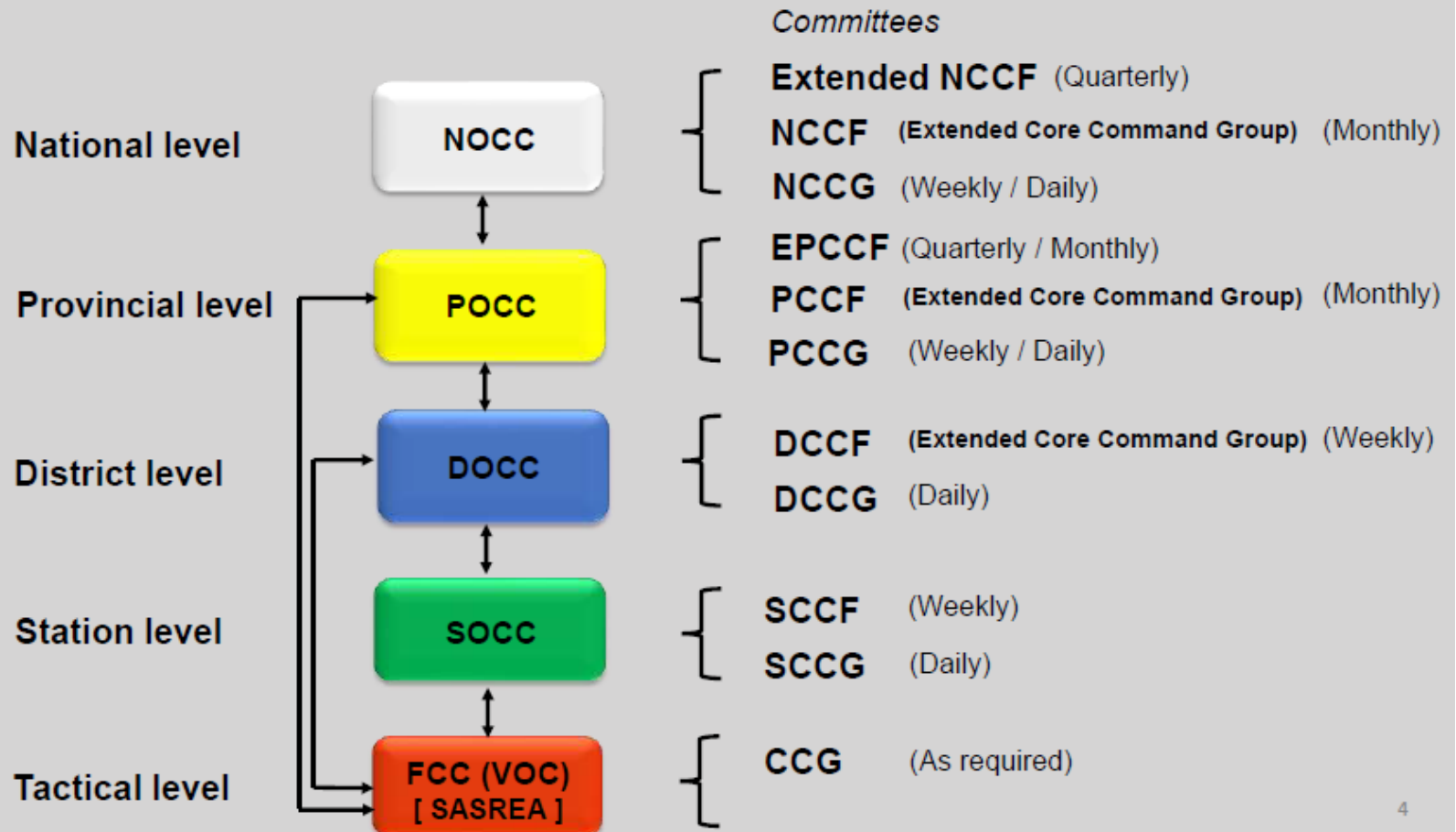
For the purposes of this presentation, the following **Focus Groups** are relevant:-

- Farming Communities
 - South African Police Service
 - Security Companies
 - Any coopted members deemed necessary to make a contribution to address rural safety.
-
- Although several farming communities have Community-based Operational Centres / Rooms from where they manage operational issues within their respective farming areas, **there is a lack of operational coordination and sharing of information** between the above mentioned stake holders and the South African Police Service
 - These Centres can provide **an overview of the current information contributors / generators** within the Rural Safety environment and the resulting products which can / will be operationalized through the Operational Command Centres on District and Provincial level, unless indicated otherwise.

OPERATIONAL MODEL 1/3



OCC Hierarchical Levels and Governance Structure

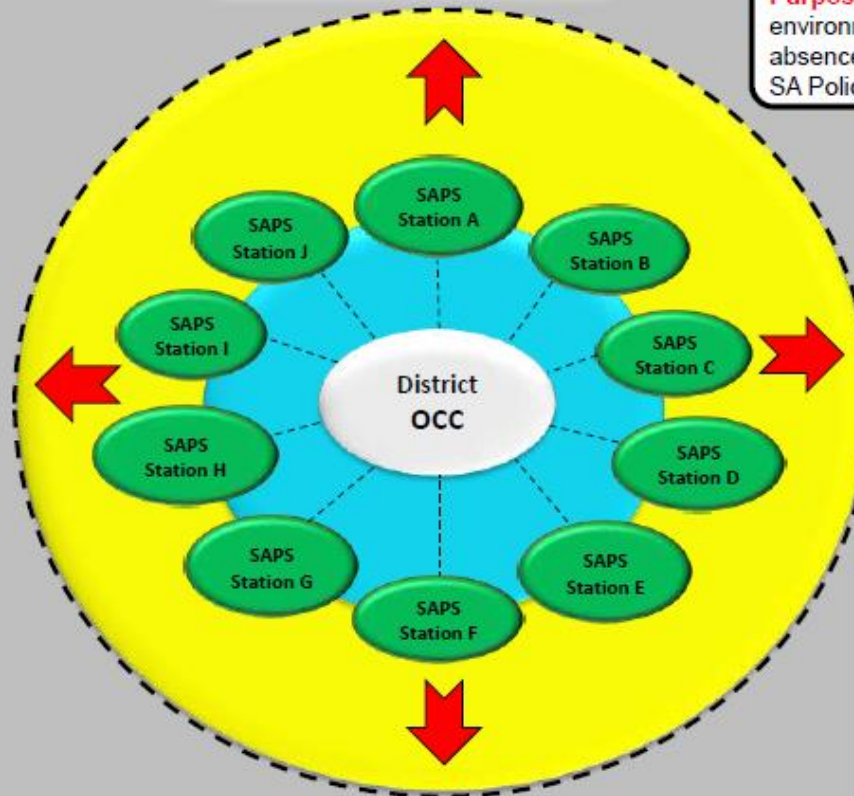


OPERATIONAL MODEL 2/3



THE OPERATIONAL COMMAND CENTRE MODEL

Co-ordination



Accountability

OCC =

- Enhanced command and control
- Effective co-ordination and accountability
- Total situational awareness**
- Enhanced operational and tactical planning
- Focussed intelligence-led policing**
- Operationalise ideology of crime combatting and frontline service delivery
- Maintenance of inclusive detection practices
- Enhanced incident response
- Enhanced Public Order Policing activation and co-ordination

The OCC is a **24-hour Operational Command Centre** that shall be managed through an Extended Core Command Group (ECCG) and Core Command Group (CCG)

Purpose: To effect crime reduction, and enable an environment where the community feels safe, an absence of fear, and the restoration of trust in the SA Police Service

Approach utilised is the **improved flow of information across station boundaries** (District) to;

- receive, process and disseminate information to all affected role players;
- prioritising of exhibits analysis;
- processing of fingerprints;
- tracing of wanted persons.

This will empower stations and district and further **enhance the concept of intelligence led policing.**

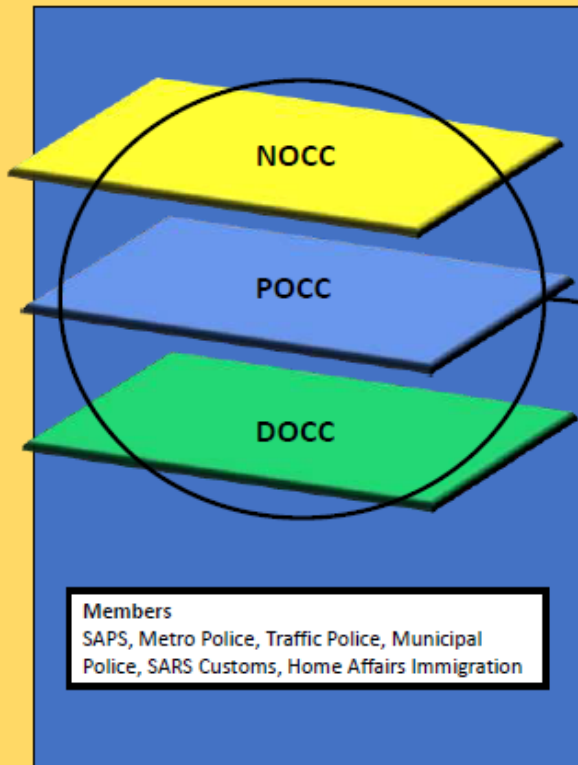
32

OPERATIONAL MODEL 3/3

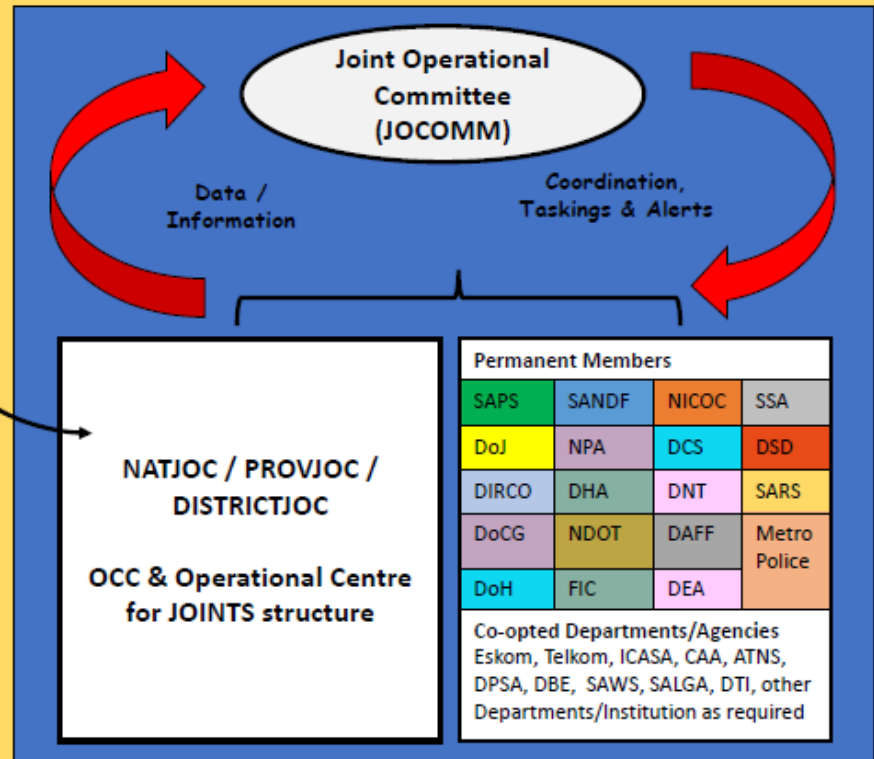


OPERATIONAL COMMAND CENTRES' ROLE IN INTERDEPARTMENTAL STRUCTURES

LAW ENFORCEMENT,
FORCE MULTIPLIERS & ENHANCERS



JOINT OPERATIONAL AND INTELLIGENCE STRUCTURES
NATJOINTS, PROVJOINTS, DISTRICTJOINTS



UTILISING TECHNOLOGY IN THE FIGHT AGAINST CRIME



SAPS and Business Against Crime (BAC) together with the Private Security Industry established the E2 model during 2018. The model, emanating from a pilot project in Gauteng was formalized through an agreement between SAPS and BAC in 2018.

One of the main benefits and capacities that E2 brings to policing is the introduction of technology, including surveillance technology, which harnesses privately and government owned CCTV capacity.

The ANPR system deployed on and linked to an ever increasing number of CCTV cameras deployed on the roads, streets, in high volume population hubs and entrances to malls and shopping centers, constantly checks against the date related to sought / circulated vehicles on the SAPS circulation system.

The aforementioned will no doubt significantly benefit policing but will also serve to contribute to the realization of the vision of the National Commissioner in respect of intelligence and technology driven policing.



EYES AND EARS INITIATIVE (E2)



An official and coordinated joint crime fighting initiative between the South African Police Service (SAPS), Business Against Crime South Africa (BACSA) and the Private Security Industry (PSI)





EYES AND EARS INITIATIVE (E2)



PURPOSE

- Uses the Private Security Industry's (PSI) geographical deployment footprint, technology and other sources of information to enhance the **situational awareness** (incident) of the SAPS.
- To enhance **operational response** to crimes, with specific emphasis on crimes which are heavily dependent on situational information and are of a shared concern.
- **# Geographical footprint of PSI**
- **# Use of Technology and resources**
- **# Situational awareness of SAPS**
- **# Enhance operational response**



STATUS OF THE E2 INITIATIVE



The initiative is properly instituted, formalised and recognised by the SAPS

Implemented in:

- Gauteng (October 2019)
- Western Cape (March 2020)
- KwaZulu-Natal (August 2020)
- Limpopo (September 2020)
- Eastern Cape (October 2020)
- Free State (April 2021)
- Mpumalanga (October 2021)
- Northern Cape (12 November 2021)

- National Operational Command Centre (NOCC)

Implementations planned:

- North West Province (When SAPS is ready)

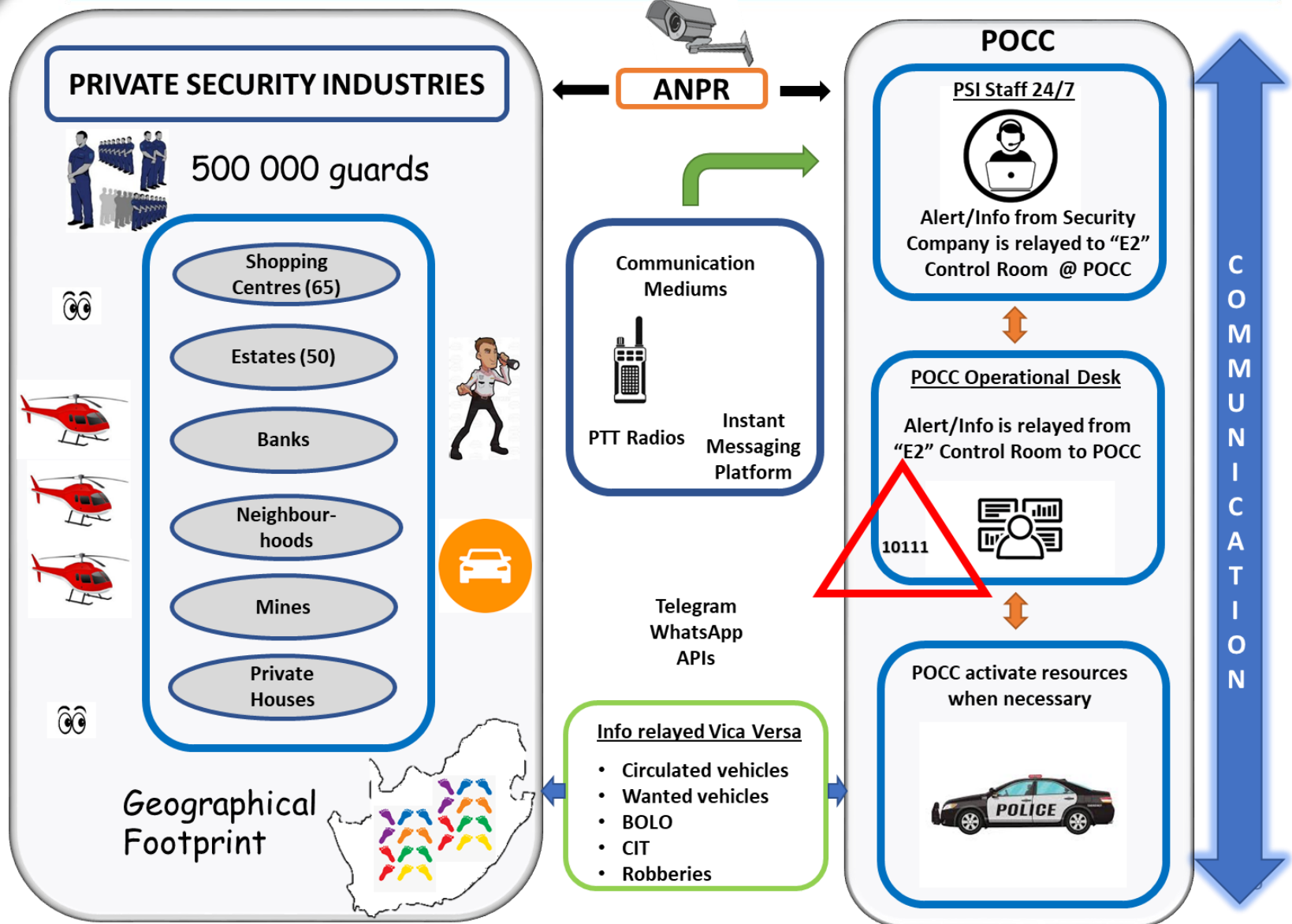
- Safer City



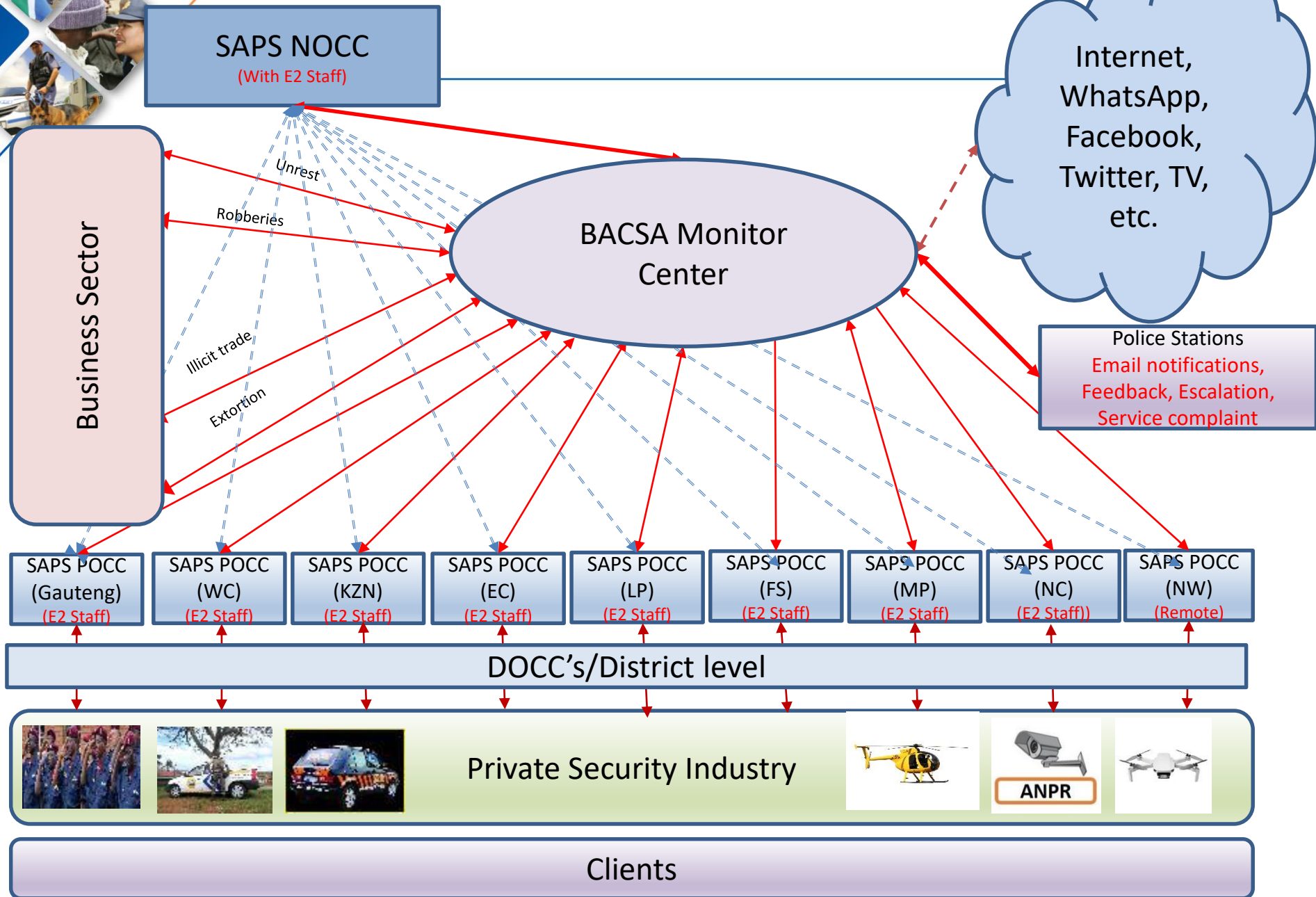
Business Against Crime
South Africa™



STATUS OF THE E2 INITIATIVE

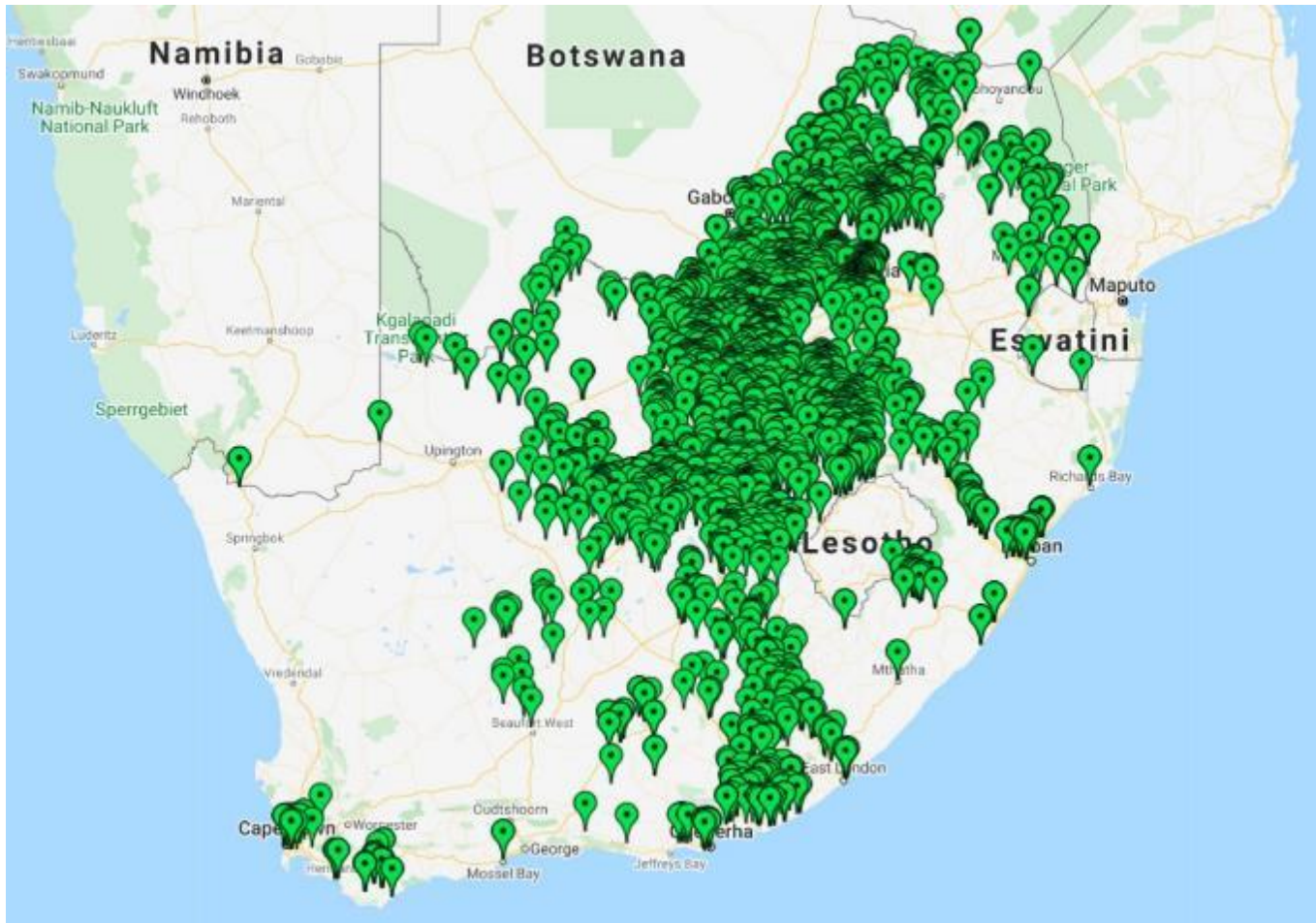


E2 Operational Deployment & Information flow





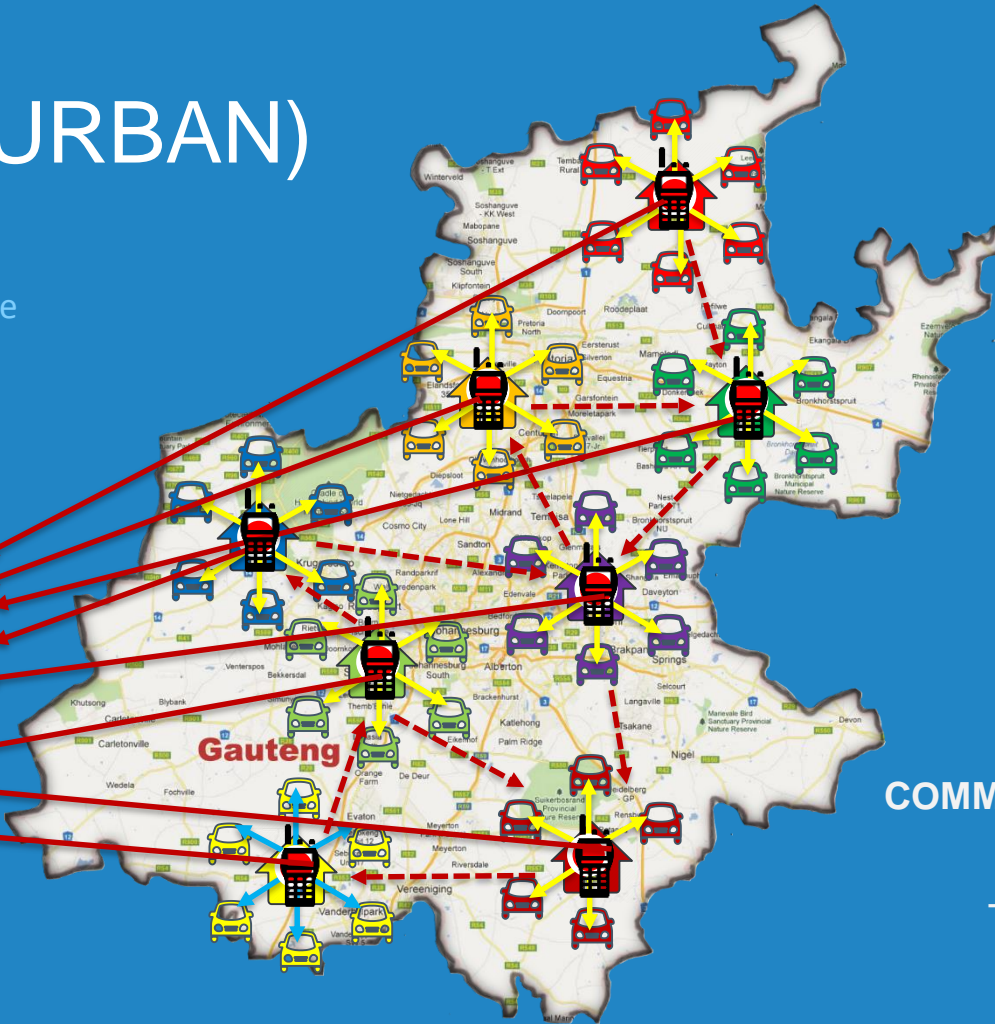
Rural Cameras



CONCEPT (URBAN)

POCC

Provincial Operational Command Centre

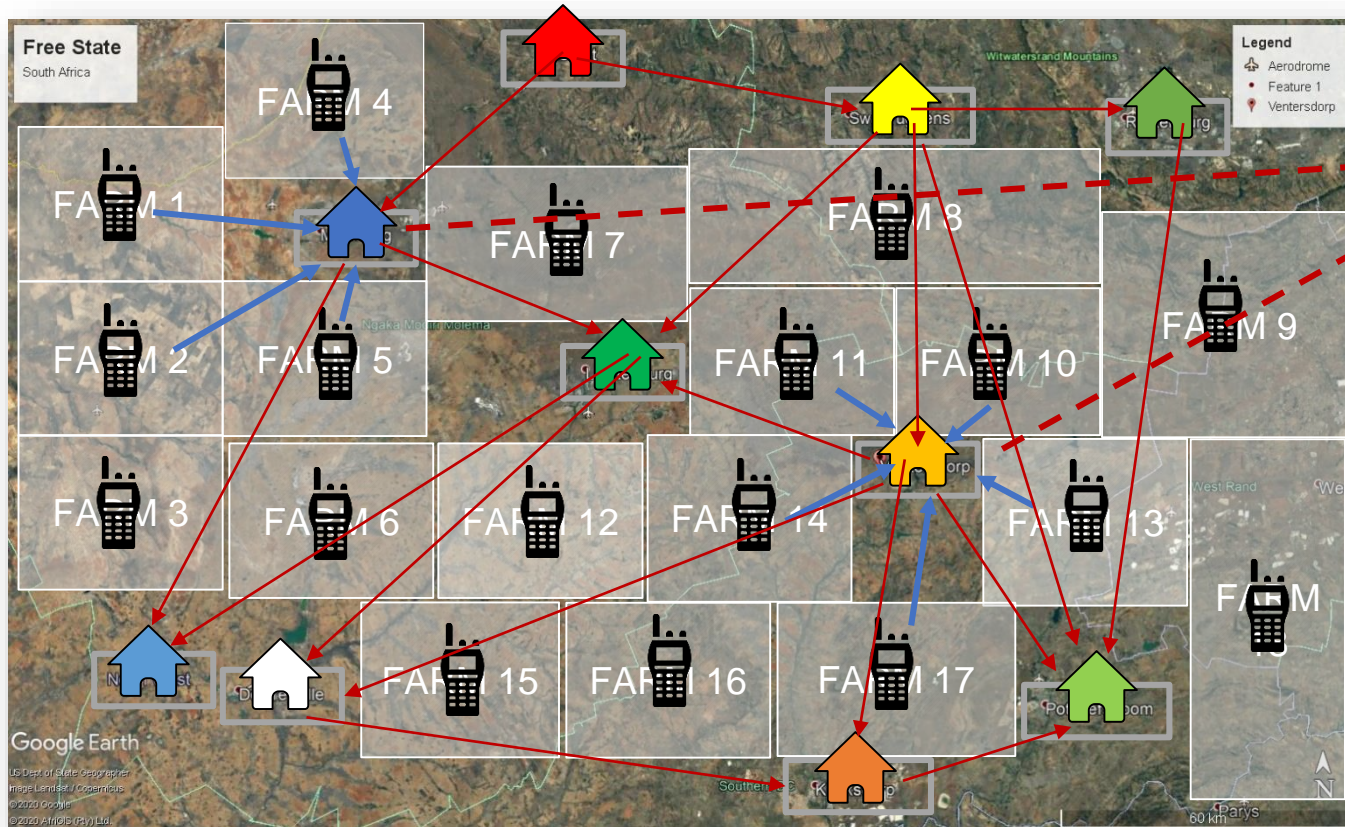


COMMUNICATION

Radio

Telegram GP

CONCEPT (RURAL)



POCC





Business Leadership SA

E2: Sources of information & resources

- More than 6 500 CCTV cameras (Johannesburg)
- More than 7 000 Automated Number Plate Recognition (ANPR) cameras, which generates
- +/- 14 million automated vehicle queries per day
- Monitored by Private sector controllers in 9 SAPS Provincial Operational Command Centres (POCCs), National Operational Command Centre and BACSA Monitoring Center
- More than 30 Telegram and WhatsApp groups
- E2 Radio system with more than 1 050 members
- Feeds from 8 private sector helicopters
- Twitter, Facebook, Media



Justice

Generating

- More than 2 300 alerts or information of incidents per day, which are purified and confirmed.
- Leading to more than 550 verified live alerts or incidents shared with SAPS per day.
- More than 400 email notifications sent to police stations per day



Integrity

Growth

Leading to (the past 12 months, to name a few)

- More than 305 suspects arrested
- More than 700 vehicles impounded
- More than 100 illegal firearms seized
- Monitoring more than 2 000 confirmed SAPS wanted vehicles that are regularly sighted.
- More than 60 vehicles impounded by Gauteng Rapid Response and Gauteng Traffic from 10 November 2021
- Numerous crimes stopped (e.g., schools, shopping centers, businesses)
- Cleaning up the SAPS Circulation System (prevent wrongful arrests)
- Remote monitoring of the looting/unrest in KZN, Gauteng and rest of the country

The catalyst for growth, transformation, and development of a strong society.



E2 Provincial Operational Deployment



SAPS NOCC
(With E2 Staff)

SAPS POCC
(E2 Staff)

Steering committee (SAPS/PSI/Rural Safety role-players)

SAPS DOCC (E2 Staff?) SAPS DOCC (E2 Staff?) SAPS DOCC (E2 Staff) SAPS DOCC (E2 Staff)

Business Sector

Private Security Industry

ANPR

- Non-PSI Rural Safety
- SAPS
 - Farm watches and patrollers
 - CPF's
 - Community patrollers
 - Organised agriculture
 - Farmers' associations
 - Government Departments

Clients

Rural Safety Clients



SUPPORTING STRATEGIES 1/2



The **Community Policing Strategy** and **Community in Blue Concept** was launched during 2018, to enhance community-police partnership in the fight against crime through multi-disciplinary collaboration with the focus, amongst others, on building community resilience to crime.

Community Policing Forums have been established at Police Stations, inclusive of Urban/Rural Police Stations and Rural Police Stations. The rural community, including rural villages, farming community, farmers and farm workers participate in these forums at station level.

Rural Safety plans are in place in the Provinces as a tool to assist police stations to prevent crime in the rural and farming community, as part of the Rural Safety Strategy.

SUPPORTING STRATEGIES 2/2



Rural Safety Priority Committees are functioning at national, provincial, cluster (district) and station levels and all role players in the rural and farming community, state departments, civil society, and labour unions are involved. This includes the SANDF,, Departments of Agriculture, Rural Development and Land Reforms, Cooperative Government and Traditional Affairs, the SAPS, organised agriculture and the farm worker unions. These committees meet on a quarterly basis, whilst station committees meet monthly to monitor the incidents of violent crime in the rural community and to establish trends and new developments and plan interventions. It further presents an opportunity for organised agriculture and farmer's unions to keep their members briefed on security related matters.

The **Framework for Police Station Activation Plan in terms of Rural Safety** compiled to provide guidance on how to activate all role players in cases of serious violence in rural areas especially on farms and small holdings.

The **Protocol for Access to Farms / Assist other Government Departments in visits to farms** is also applicable. This protocol is not applicable if the land owner is the subject of a police investigation or operation or where the police has reason to believe that keeping to the protocol would jeopardise the investigation or operation.

The **cooperation practises between the traditional leadership structures** and provinces, clusters (districts) and police stations are also of importance.

CRITICAL SUCCESS FACTORS 1/2



- First and foremost, the implementation of the **72-hour activation plan** which will address the urgency of police action required during rural attacks / incidents of crime. The plan is activated immediately after serious crime is committed by mobilising integrated operational environment of the SAPS to speedily track, trace and apprehend / arrest the suspect within 72 hours;
- Allocation of **adequate resources** to rural police stations and the **building of capabilities** in accordance with the National Resource Demand Plan;
- **Increased visible policing patrols** through the deployment of **mounted units**;
- **Increased visible policing patrols** through the utilisation of **motorbike patrols**, especially in the farming / smallholding communities;
- A **reviewed reservist system** whereby community members such as farmers, farm workers and farm watch members, can become reservists (if they qualify);
- Community members such as farmers, farm workers, and farm watch members, register to become part of the **E2 initiative** considering structural framework of the E2 Initiative;



CRITICAL SUCCESS FACTORS 1/2



- **Establishment of Community Policing Forums** inclusive of traditional leaders;
- Implementation of the **Community in Blue initiative**;
- Implementation of **Rural Safety plans** throughout all provinces;
- **Conducting site visits** at existing rural safety community structures to evaluate their operation and level of readiness which will inform the approach of integration with SAPS SOCCs;
- Establishment of **Rural Safety Committees** throughout all provinces; and
- Last but not least, **linking of existing community safety centres** to the nearest Station **Operational Command Centres** of SAPS (whether physically or virtually).

The approved **Operational Command Centre** model within the South African Police Service at all levels of policing is critical to the success of rural safety.



CONCLUSION



The SAPS has reached a point where by the demands for policing both in approach, resourcing and infrastructure is facing challenging times in all spheres of government, resulting in the need for the optimisation of all operational resources and collaboration, with not only government, but the private sector and the community in general, to address crime in the rural environment through:-

An integrated and multi-disciplinary approach between SAPS, Government and civil society, to improve the safety and security felt by persons living and working on farms; and the mobilisation of communities for the implementation of a successful rural safety strategy.

The information sharing process will commence with the sharing of information obtained from identified Community-based Operational Centres to the identified Station and District Operational Command Centres. From there, depending on the severity of the threat / occurrence, the information will be escalated to the relevant Provincial Operational Command Centre(s) or the National Operational Command Centre or the NATJOINTS Nerve Centre.

What is important for law enforcement, is to disrupt, dismantle and neutralise attacks on the farming communities through a synergy of efforts, ensuring of collaboration and coordination between the focus groups, i.e. Community-based Operational Centres, Security Companies and Law Enforcement Agencies, in order to produce a combined effect greater than the sum of their separate endeavours.

